



November 2015

third floor plan



INVESTOR IN PEOPLE

QEII Centre
Broad Sanctuary, Westminster, London SW1P 3EE
Telephone: +44 (0)20 7222 4000 **e-mail:** info@QEIICentre.London **Website:** www.QEIICentre.London

Fleming | Whittle | Britten

third floor

Fleming Whittle Fleming + Whittle combined Britten Guild

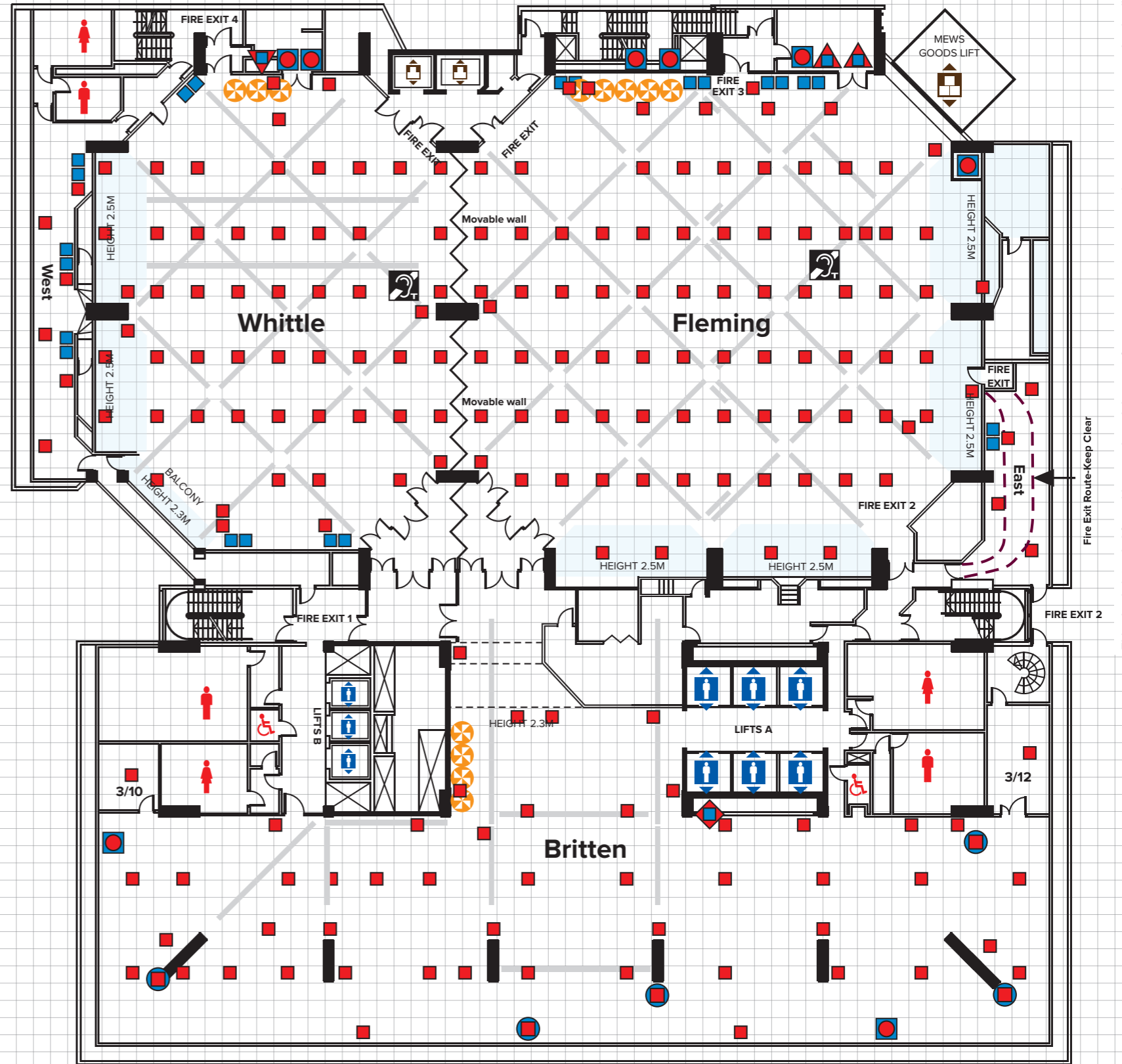
Recommended Capacities

| | | | | | |
|----------------------|-------|-------|---------------|-----|----|
| Theatre | 780rp | 400rp | 1300fp/1200rp | – | 56 |
| Classroom | 348* | 206* | 600* | – | 30 |
| Boardroom | 100 | 80 | – | – | 30 |
| Banquet | 550 | 340 | 930 | 450 | 40 |
| Fork buffet | – | – | – | 750 | 60 |
| Cabaret [†] | 294rp | 161rp | 497rp | – | 28 |

rp = Rear projection. [†]Cabaret capacities are based on 7 people to a table. *Rear projection recommended in Fleming and Whittle Rooms. Please note that these figures are subject to change according to safety requirements, legislation and AV usage.

Dimensions

| | | | | | |
|--------------|--------------------|--------------------|----------------------|--------------------|---------------------|
| Height (max) | 4.9 m | 4.9 m | 4.9 m | 6.7 m | 3.8 m |
| Height (min) | 2.5 m | 2.5 m | 2.5 m | 4.7 m | 3.2 m |
| Length | 29.4 m | 28.8 m | 56.9 m | 54.5 m | 13.3 m |
| Width | 29.3 m | 21.3 m | 29.3 m | 12.6 m | 9.5 m |
| Area | 860 m ² | 515 m ² | 1,375 m ² | 767 m ² | 85.4 m ² |



This plan is intended for guidance only and does not form any contract, representation or warranty, expressed or implied.

Key

- | | | | |
|------------------------------------|----------------------------------|------------------|-----------------|
| 13 amp wall socket | Power 3 phase 63A (fused at 50A) | Lift: Passenger | Lighting Bars |
| Electrical floor sockets | Power 3 phase 32A | Lift: Goods | |
| Power 3 phase 125A | Power single phase 13A | A/V Control Room | |
| Power 3 phase 125A (fused at 100A) | Power single phase 16A | Induction loop | |
| Power 3 phase 125A (fused at 80A) | Sound control | Toilets | Scale in metres |
| Power 3 phase 63A | Fan housing | Pillar | 0 2 4 6 8 10 |

