

November 2015

# fourth floor plan



INVESTOR IN PEOPLE

**QEII Centre**  
 Broad Sanctuary, Westminster, London SW1P 3EE  
**Telephone:** +44 (0)20 7222 4000 **e-mail:** info@QEIICentre.London **Website:** www.QEIICentre.London

St James | Westminster | Rutherford | Moore | Abbey

# fourth floor

	St James	Westminster	Moore +Rutherford +Abbey	Rutherford +Moore or Abbey	Rutherford	Moore or Abbey
<b>Capacities</b>						
Theatre	120rp	140rp	—	—	78	110
Classroom	50rp	66rp	—	—	40	50
Boardroom	30	30	—	—	30	40
Banquet	120	—	200	135	60	70
Fork buffet	180	—	250	160	70	85
Cabaret†	56rp	63rp	—	—	28	56

†Cabaret capacities are based on 7 people to a table.

Please note that these figures are subject to change according to safety requirements, legislation and AV usage.

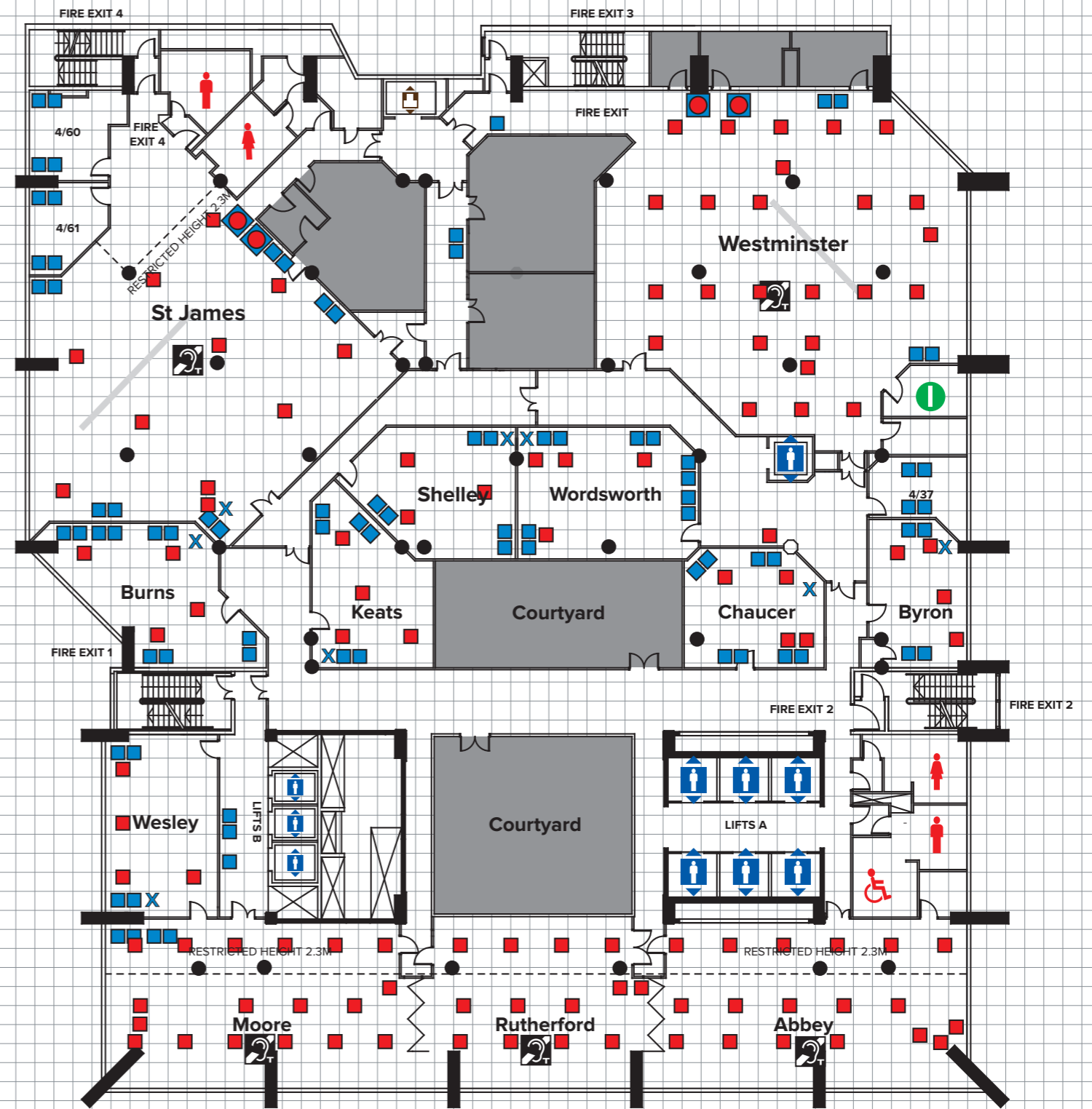
<b>Dimensions</b>	St James	Westminster	Moore +Rutherford +Abbey	Rutherford +Moore or Abbey	Rutherford	Moore or Abbey
Height (max)	3.1 m	3.1 m	3.0 m	3.0 m	3.0 m	3.0 m
Height (min)	2.2 m	2.2 m	2.2 m	2.2 m	2.2 m	2.2 m
Length	Irregular shaped room	Irregular shaped room	44.1 m	27.8 m	11.5 m	16.3 m
Width	Irregular shaped room	Irregular shaped room	8.0 m	8.0 m	8.5 m	8.0 m
Area	290 m <sup>2</sup>	355 m <sup>2</sup>	382m <sup>2</sup>	256 m <sup>2</sup>	126 m <sup>2</sup>	130 m <sup>2</sup>

<b>Small meeting rooms</b>	Wesley	Byron	Keats	Shelley	Burns	Chaucer	Wordsworth
----------------------------	--------	-------	-------	---------	-------	---------	------------

### Recommended Capacities

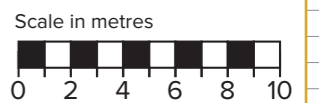
Theatre	40	25	30	40	30	28	42
Classroom	24	12	16	20	16	16	24
Cabaret	28	14	14	21	21	14	14

Please note that these figures are subject to change, according to safety requirements, legislation and AV usage.



### Key

13 amp wall socket	Power 3 phase 63A	Sound control	Lift: Goods	Toilets	AV Control (Cannot be removed)
Electrical floor sockets	Power 3 phase 32A	Fan housing	A/V Control Room	Lighting bar	
Power 3 phase 125A	SI booth	Lift: Passenger	Induction loop	Pillar	



This plan is intended for guidance only and does not form any contract, representation or warranty, expressed or implied.