



November 2015

fifth floor plan



fifth floor

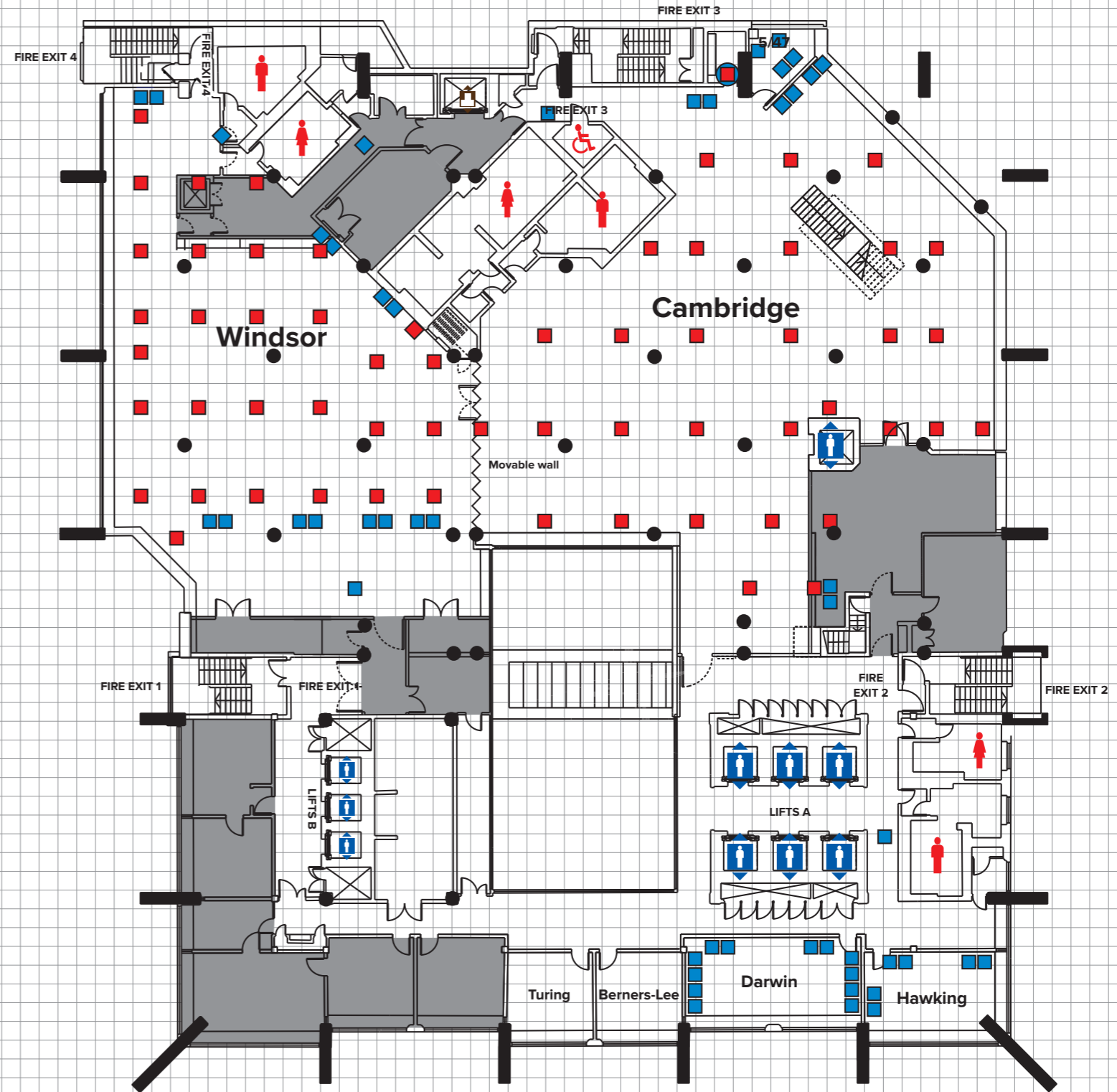
	Windsor	Cambridge	Windsor and Cambridge combined
Capacities			
Reception	300	400	700
Theatre	180	—	—
Classroom	80	—	—
Boardroom	42	—	—
Dinner	200	280	400
Fork buffet	250	350	600
Cabaret†	77	—	—

†Cabaret capacities are based on 7 people to a table. Please note that these figures are subject to change according to safety requirements, legislation and AV usage.

Dimensions	Windsor	Cambridge	Windsor and Cambridge combined
Height (max)	3.1 m	3.1 m	3.1 m
Height (min)	2.5 m	2.5 m	2.5 m
Length	Irregular shaped rooms		
Width	Irregular shaped rooms		
Area	330 m ²	510 m ²	840 m ²

Smaller meeting room capacities	Darwin	Hawking	Turing	Berners-Lee
Theatre	35	25		
Boardroom	20	12	8	8
Cabaret	21	14		

Please note that some power locations have yet to be finalised at the time of producing this floorplan. We would advise confirming exact power requirements with your event manager.



Key

13 amp wall socket	Power 3 phase 63A	Sound control	Lift: Goods	Toilets
Electrical floor sockets	Power 3 phase 32A	Fan housing	A/V Control Room	Lighting bar
Power 3 phase 125A	SI booth	Lift: Passenger	Induction loop	Pillar

Scale in metres
0 2 4 6 8 10

This plan is intended for guidance only and does not form any contract, representation or warranty, expressed or implied.