



January 2019

fifth floor

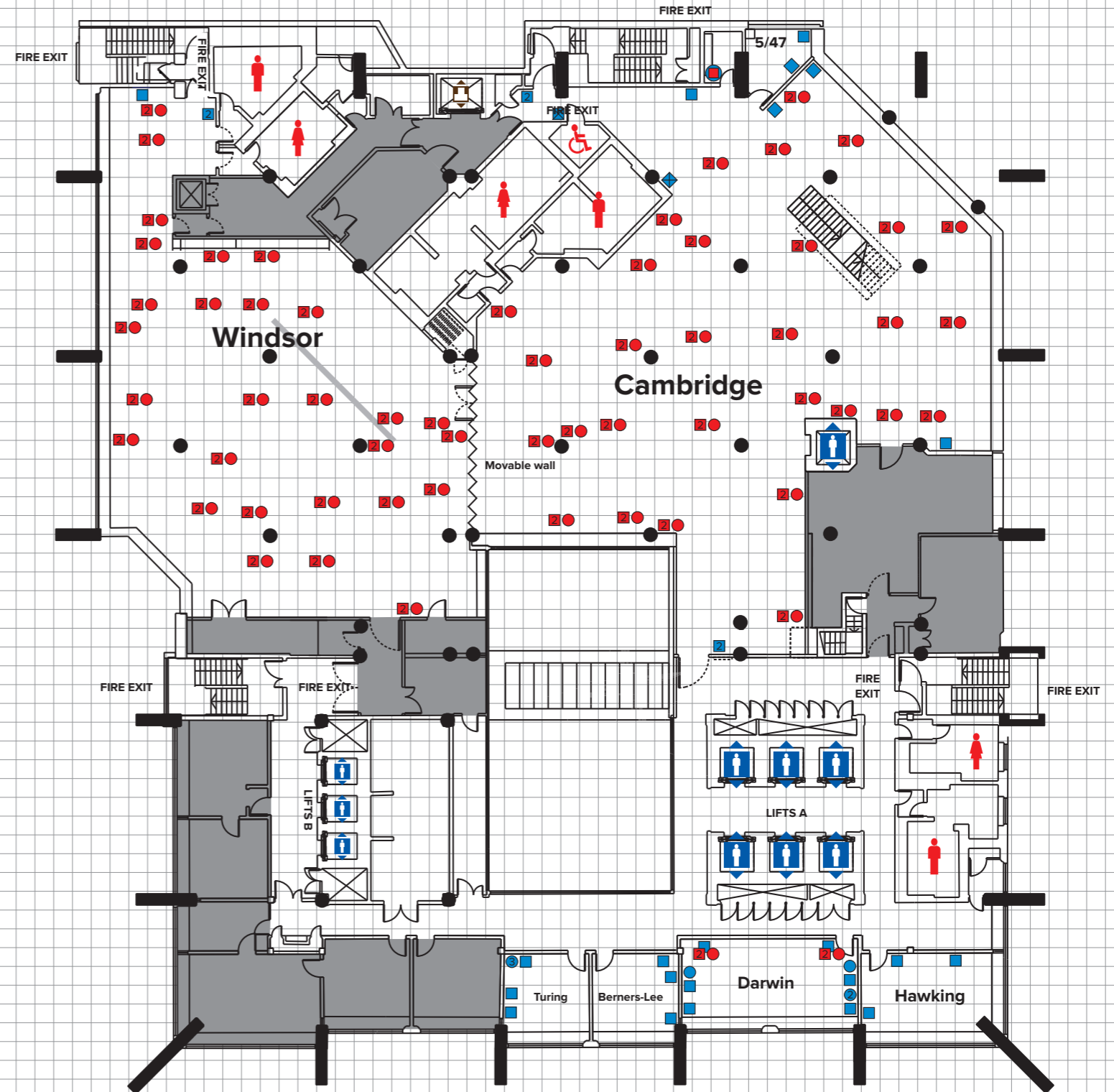
	Windsor	Cambridge	Windsor and Cambridge combined
Capacities			
Reception	300	400	700
Theatre	180	—	—
Classroom	80	—	—
Boardroom	42	—	—
Dinner	200	280	400
Fork buffet	250	350	600
Cabaret†	77	—	—

†Cabaret capacities are based on 7 people to a table. Please note that these figures are subject to change according to safety requirements, legislation and AV usage.

Dimensions	Windsor	Cambridge	Windsor and Cambridge combined
Height (max)	3.1 m	3.1 m	3.1 m
Height (min)	2.5 m	2.5 m	2.5 m
Length	Irregular shaped rooms		
Width	Irregular shaped rooms		
Area	330 m ²	510 m ²	840 m ²

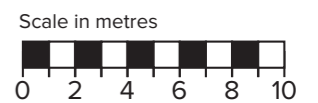
Smaller meeting room capacities	Darwin	Hawking	Turing	Berners-Lee
Theatre	35	25		
Boardroom	20	12	8	8
Cabaret	21	14		

Please note that some power locations have yet to be finalised at the time of producing this floorplan. We would advise confirming exact power requirements with your event manager.



Key

- 2x 13A double floor sockets
- 13A single wall socket
- 13A double wall socket
- 2x 13A double wall sockets
- Power 3 phase 32A
- Single floor data port
- Single wall data port
- Twin wall data port
- ⊕ Triple wall data port
- Lighting bar
- ~ Moveable wall
- ↑ Passenger lift
- ♿ Toilets
- ⬆ Goods lift
- Pillar



This plan is intended for guidance only and does not form any contract, representation or warranty, expressed or implied.