



January 2019

first floor

Pickwick

Capacities

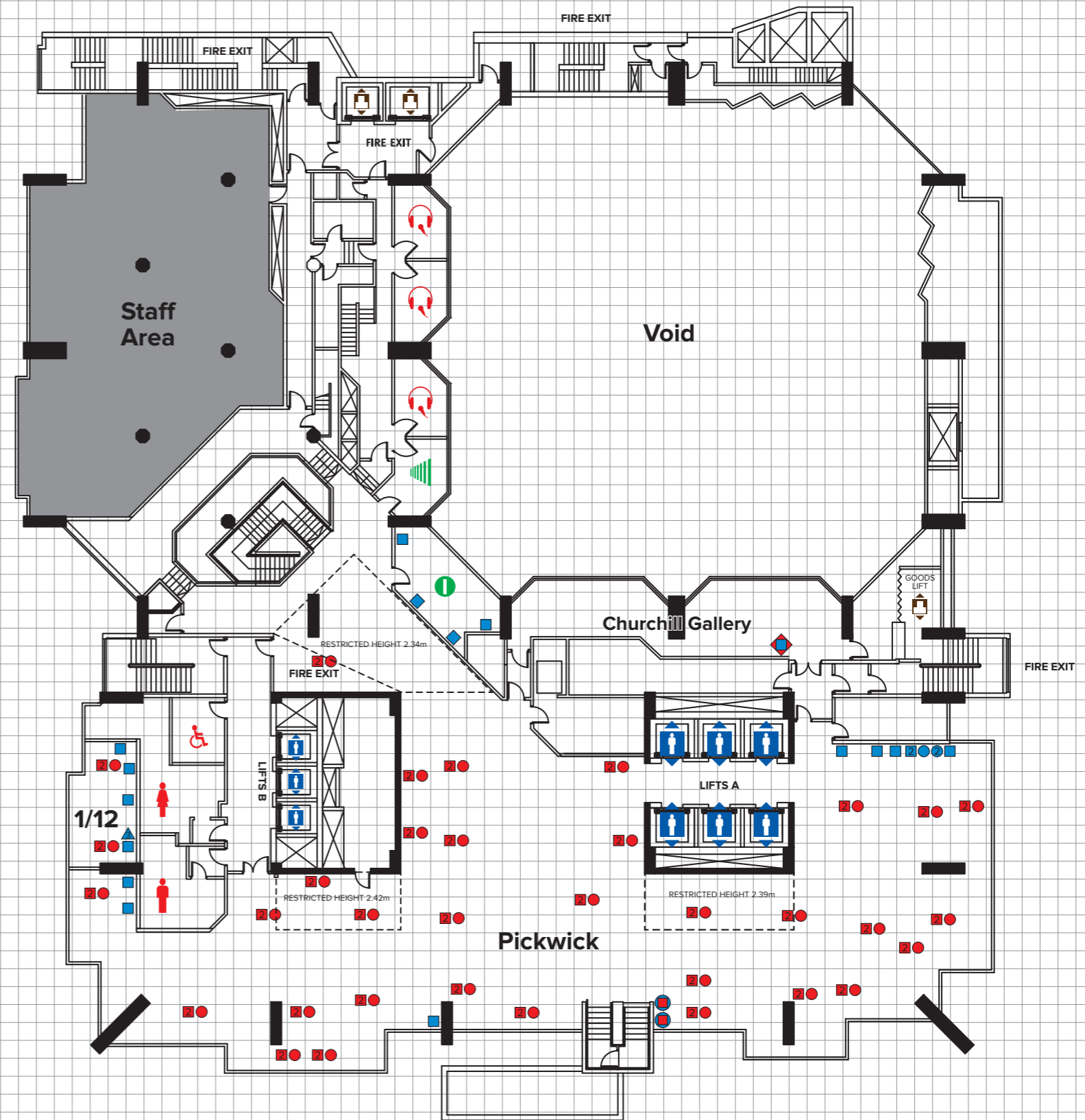
Theatre	–
Classroom	–
Boardroom	–
Banquet	370
Seated buffet	300
Fork buffet	570

65 seats in the Churchill Auditorium Gallery

Please note that these figures are subject to change according to safety requirements, legislation and AV usage.

Dimensions

Height (max)	3.47 m
Height (min)	2.34 m
Length	48.94 m
Width	13.87 m
Area	585 m ²



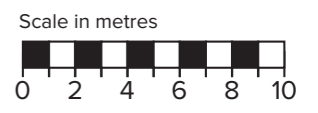
Key

- 2x 13A double floor sockets
- 13A double wall socket
- 2x 13A double wall sockets
- Power 3 phase 32A

- Power 3 phase 125A
- Single floor data port
- Single wall data port
- Twin wall data port

- SI booth
- Sound control
- AV control
- Toilets

- Passenger lift
- Goods lift
- Pillar



This plan is intended for guidance only and does not form any contract, representation or warranty, expressed or implied.