

January 2019

sixth floor

Mountbatten

Capacities

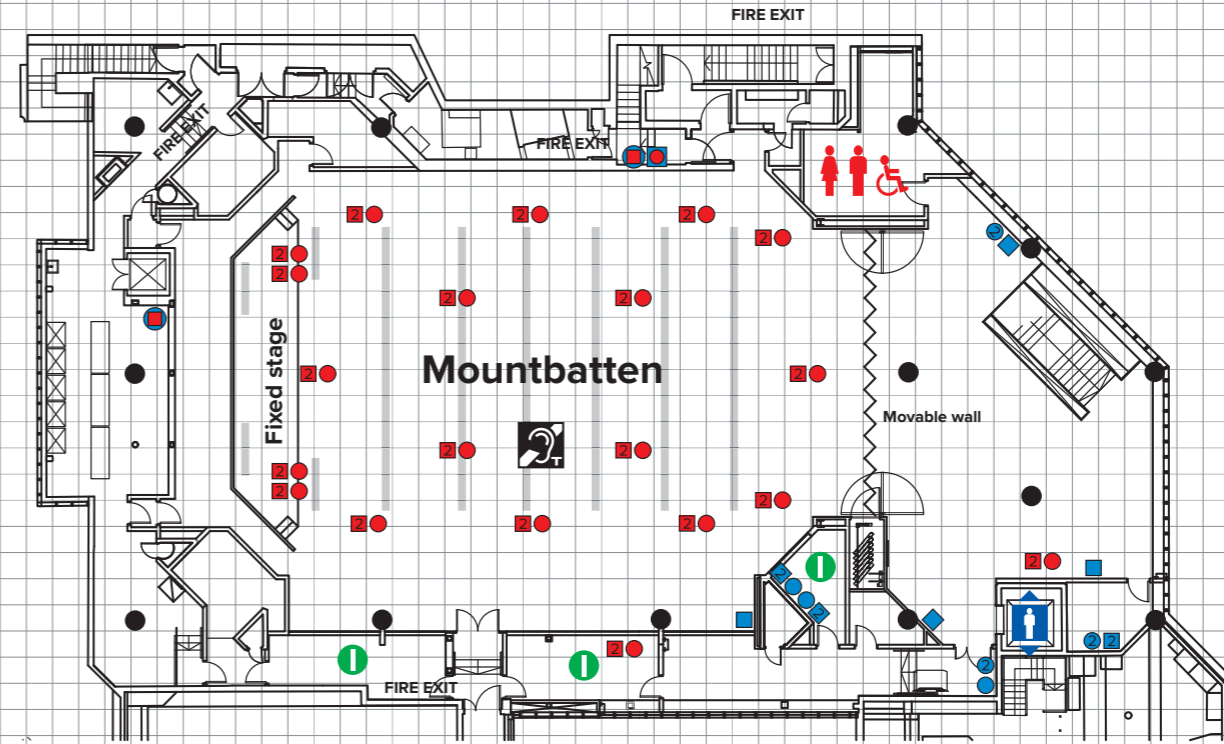
Theatre	410
Classroom	200
Dinner (based on 32 tables of 12)	384 (with moveable wall removed)
Reception	600
Fork buffet	450
Cabaret†	161

†Cabaret capacities are based on 7 people to a table. Please note that these figures are subject to change according to safety requirements, legislation and AV usage.

Dimensions

Height (max)	4.9 m
Height (min)	4.7 m
Length (with moveable wall closed)	19.5 m
Length (with moveable wall open from front of the stage)	32.5m
Width (max)	18.1 m
Area (with moveable wall closed)	351 m ²

Please note that some power locations have yet to be finalised at the time of producing this floorplan. We would advise confirming exact power requirements with your event manager.



Key

13A double floor socket	Power 3 phase 32A	Twin wall data port	Moveable wall
2x 13A double floor sockets	Power 3 phase 63A	Lighting bar	Passenger lift
13A double wall socket	Single floor data port	AV control	Toilets
2x 13A double wall sockets	Single wall data port	Induction loop	Pillar



This plan is intended for guidance only and does not form any contract, representation or warranty, expressed or implied.