

January 2019

# third floor

Fleming    Whittle    Fleming + Whittle combined    Britten    Guild

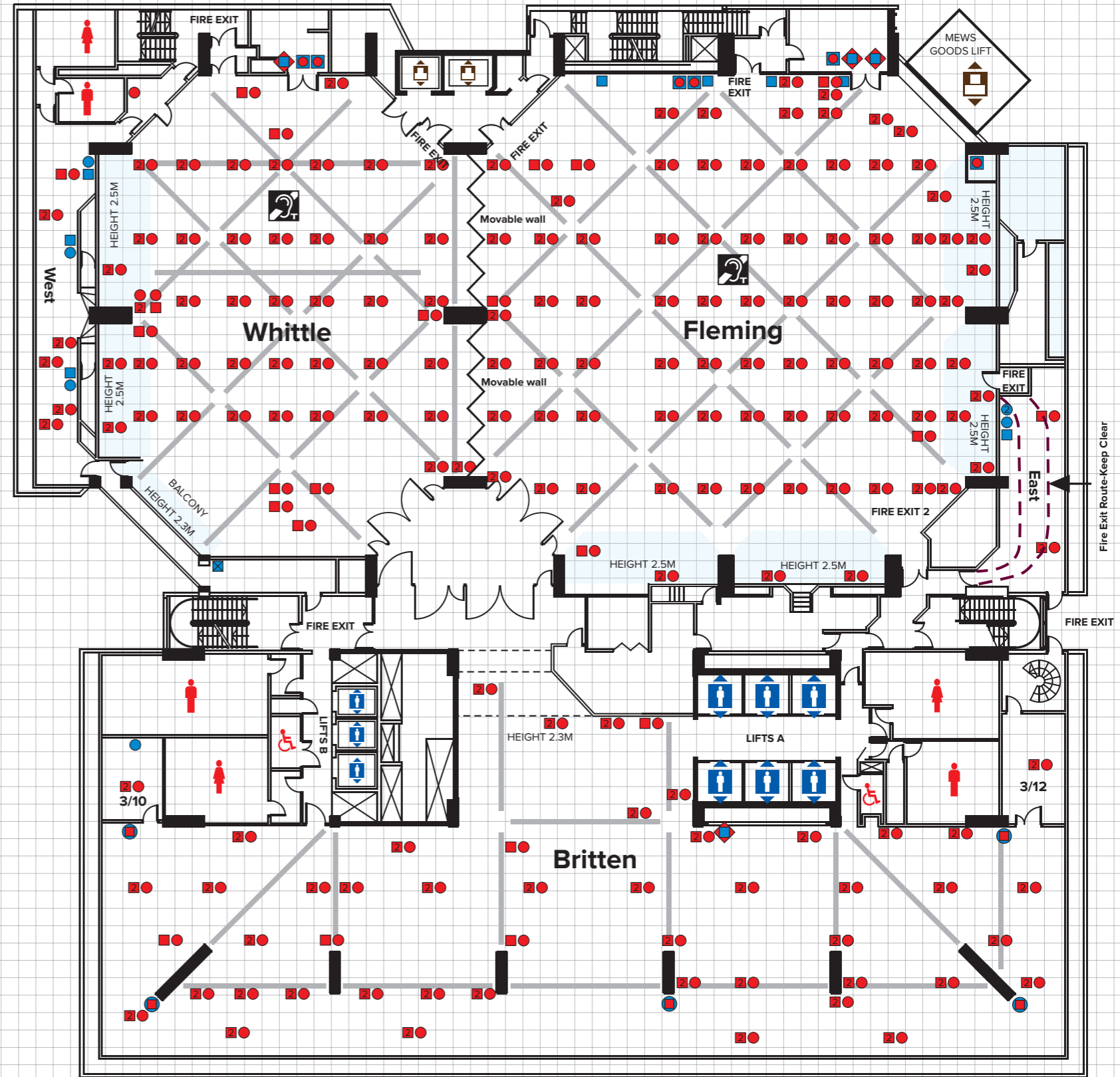
## Recommended Capacities

Theatre	780rp	400rp	1300fp/1200rp	–	56
Classroom	348*	206*	600*	–	30
Boardroom	100	80	–	–	30
Banquet	550	340	930	450	40
Fork buffet	–	–	–	750	60
Cabaret†	294rp	161rp	497rp	–	28

rp = Rear projection. †Cabaret capacities are based on 7 people to a table. \*Rear projection recommended in Fleming and Whittle Rooms. Please note that these figures are subject to change according to safety requirements, legislation and AV usage.

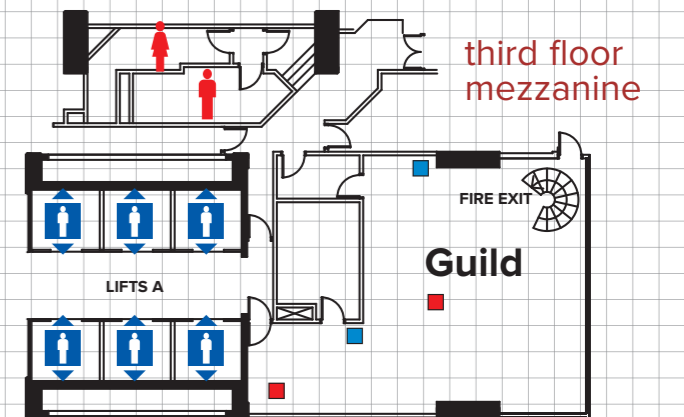
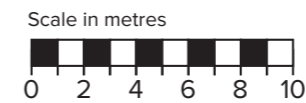
## Dimensions

Height (max)	4.9 m	4.9 m	4.9 m	6.7 m	3.8 m
Height (min)	2.5 m	2.5 m	2.5 m	4.7 m	3.2 m
Length	29.4 m	28.8 m	56.9 m	54.5 m	13.3 m
Width	29.3 m	21.3 m	29.3 m	12.6 m	9.5 m
Area	860 m <sup>2</sup>	515 m <sup>2</sup>	1,375 m <sup>2</sup>	767 m <sup>2</sup>	85.4 m <sup>2</sup>



### Key

- 13A double floor socket
- 2 2x 13A double floor sockets
- ⊗ 13A single wall socket
- 13A double wall socket
- Power 3 phase 32A
- Power 3 phase 63A
- ◆ Power 3 phase 125A
- Single floor data port
- Single wall data port
- ② Twin wall data port
- Lighting bar
- ~ Moveable wall
- ↑ Passenger lift
- ♿ Toilets
- ⬆ Goods lift
- Pillar



This plan is intended for guidance only and does not form any contract, representation or warranty, expressed or implied.